

Lansinoh®



Signature Comfort Double Electric Breast Pump

INSTRUCTIONS FOR USE

Intended Use of Breast Pump

The Lansinoh® Signature Comfort Double Electric Breast Pump is intended to express and collect the breastmilk of a nursing woman for the purpose of feeding collected breastmilk to a baby. The Signature Comfort is intended for a single user.

Indications of Breast Pump

Lansinoh® Signature Comfort Double Electric Breast Pumps are indicated to elimination of clinical situations such as milk stasis in the breast, engorgement and mastitis caused by insufficient milk discharge, relieve sore and cracked nipples and to bring out flat or inverted nipples. Also, Lansinoh® Signature Comfort Double Electric Breast Pumps enable mothers to provide breast milk for babies who cannot feed directly at the breast for a variety of reasons, such as latch-on problems, premature or unwell babies.

Contraindication of Breast Pump

There are no known contraindications.

Important Safeguards

The Lansinoh® Signature Comfort Double Electric Breast Pump is a personal care item and for hygienic reasons should never be shared between mothers or resold from one mother to another. Either of these actions will void the warranty.

If you are a mother who is infected with Hepatitis B, Hepatitis C or Human Immunodeficiency Virus (HIV), pumping breastmilk using the Lansinoh® Signature Comfort Double Electric Breast Pump will not reduce or remove the risk of transmitting the virus to your baby through your breastmilk.

When using electrical products, especially when children are present, basic safety precautions should always be maintained, including the following:

Read All Instructions Before Using

Danger: To reduce the risk of electrocution:

- Always unplug this product immediately after using.
- Do not use while bathing.
- Do not place or store this product where it can fall or be pulled into a tub or sink.
- Do not place or drop pump into water or other liquid.
- Do not reach for an electrical product that has fallen into water.
- Unplug immediately.

Warning: To reduce the risk of burns, electrocution, fire, or injury to persons:

- This product should never be left unattended when plugged in.
- Close supervision is necessary when this product is used near children.
- Use this product only for its intended use as described in this manual. Do not use attachments not recommended by the manufacturer.
- Never operate this product if it has a damaged cord or plug, if it is not working properly, if it has been dropped or damaged, or dropped into water.
- Keep the cord away from heated surfaces.
- Never use while sleeping or drowsy.

- Never drop or insert any object into any opening or tubing.
- Do not use this product if it is broken or any parts are missing.
- Do not allow small children or pets to play with the pump unit, AC adapter, etc.
- Do not use outdoors with the AC adapter or operate where aerosol spray products are being used or where oxygen is being administered.

Save These Instructions along with your receipt for future reference.

Submit warranty card online at Lansinoh.com/warranty

Congratulations!

Your decision to provide your baby with breastmilk, even if you need to be apart, is one of the most precious gifts you can give your baby. The Lansinoh® Signature Comfort is a safe, efficient and effective choice for moms who need to pump regularly.

Contents	Page
1. Quick Start Guide	3
2. Parts Diagrams.....	5
2.1 Pump Diagram	
2.2 Pump Parts	
3. Cleaning Instructions.....	8
3.1 Before First Use of Breastmilk Expression Set	
3.2 Cleaning of Breastmilk Expression Set	
3.3 Before Each Use of Breastmilk Expression Set	
4. Assembly	9
4.1 Assembling the Breastmilk Expression Set	
4.2 Connecting the Breastmilk Expression Set	
4.3 Connecting for Single Pumping	
4.4 Adding Silicone Flange Inserts	
5. Using the Lansinoh Signature Comfort Double Electric Breast Pump.....	12
5.1 Power Options	
5.2 Getting Started	
5.3 2-Phase Technology	
5.4 Customization for Comfort and Efficiency	
5.5 Completing your Pumping Session	
6. Pumping Tips	15
7. Troubleshooting.....	15
8. Breastmilk Storage Guidelines.....	16
9. The Lansinoh® NaturalWave® Nipple.....	17
10. Technical Data.....	19
11. Warranty	20
12. Declaration for Electromagnetic Compatibility (EMC).....	21

PLEASE DO NOT RETURN THIS PUMP TO THE RETAILER.

Lansinoh’s dedicated Customer Service team is here to help.

If you experience any issues with your Lansinoh® Signature Comfort breast pump please call **800-292-4794** or email customerservice@lansinoh.com, Monday - Friday 8am-8pm EST.

1. Quick Start Guide

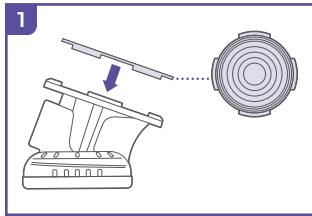
Do NOT wash or disinfect tubing

Before first use, sterilize all parts that will come into contact with milk according to instruction on pg 8, section 3.1.

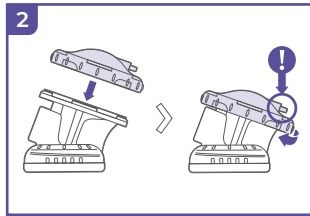
Please carefully read all instructions prior to use

Assembly

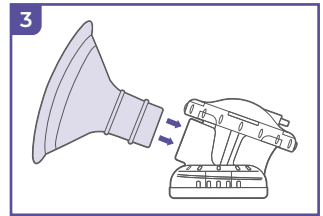
See detailed instruction on pgs 9-11. Proper assembly is essential to ensure proper function and suction.



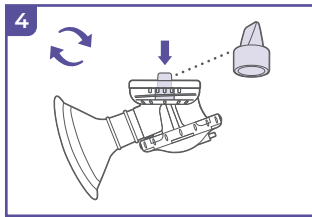
1
Insert purple diaphragm with the feet down



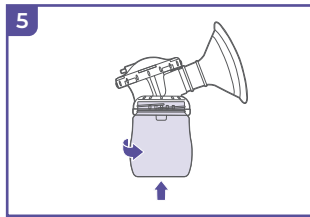
2
Attach clear cover and twist so tubing connector faces back



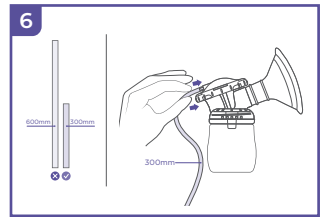
3
Attach flange



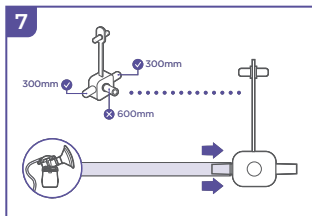
4
Insert valve



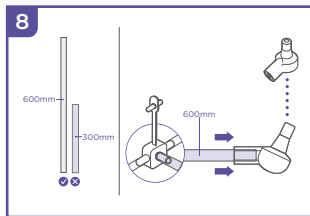
5
Attach bottle



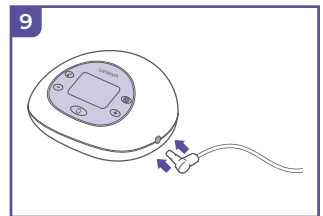
6
Attach tubing



7
Secure Y connector



8
Secure connector

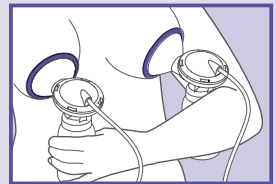


9
Attach to pump base



Connect pump to power using AC Adapter or six AA Alkaline Batteries (not included)


Getting Started

Hold Breastmilk Expression Set to your breasts so that the nipple is aligned to extend straight toward the nipple tunnel of the breast flange, ensuring there are no gaps for air to enter. Make sure set is tilted slightly downward to allow milk to flow into bottles.

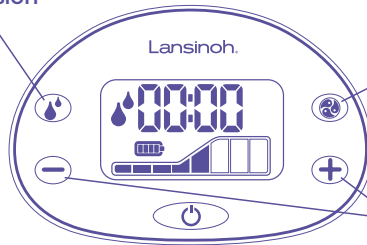


2-Phase Technology – Using Let-Down and Expression Phases

Press the power button  to start the pump in Let-Down Phase . Let-Down Phase will run automatically for two minutes.

To begin Expression Phase sooner, press the Let-down/Expression Toggle button  to move to the Expression Phase. Press the Let-down/Expression Toggle button again at any point to switch back to Let-Down Phase.

Let-Down/Expression
Toggle Button




Pumping Style
Toggle Button

Suction Level

Customization for Comfort and Efficiency

Pumping Style Selection

Every baby feeds differently. The Signature Comfort offers three different pumping styles to choose from, allowing you to choose the option that is most like your baby's feeding patterns. Change the pumping style using the Pumping Style Toggle button  to find the pumping style that works best for you.



Style 1



Style 2



Style 3

NOTE: When you switch to the Expression Phase the pump will start in Pumping Style 2.

Adjusting Suction Levels

Increase or decrease the suction to the maximum level that you find comfortable.

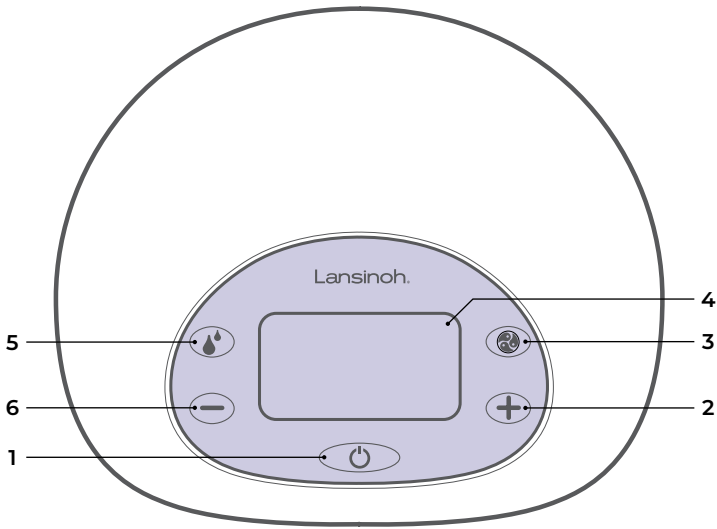
Increase suction by pressing the  button.

Decrease suction by pressing the  button.








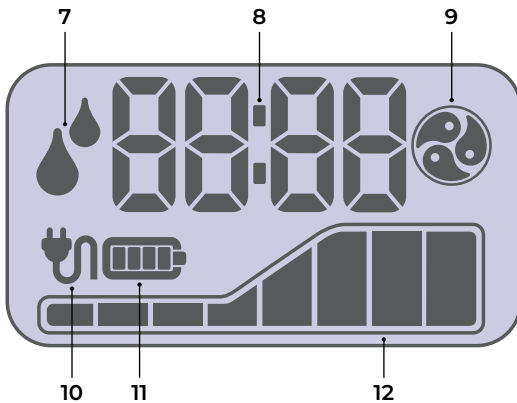
Lansinoh® is here to support you. If you have questions, please do not hesitate to contact us at (800) 292-4794

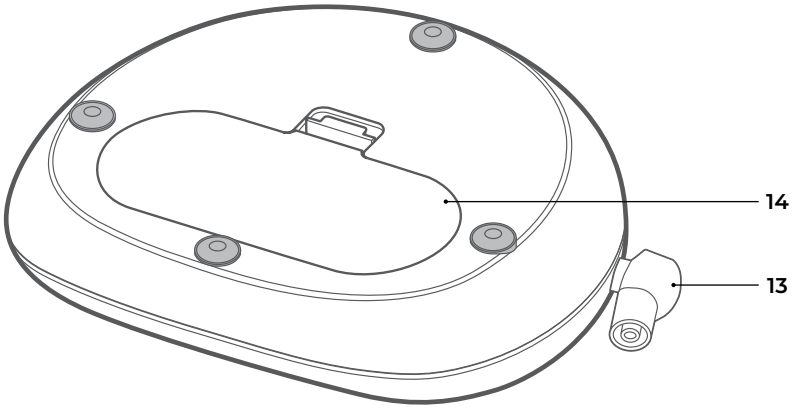
2. Parts Diagrams



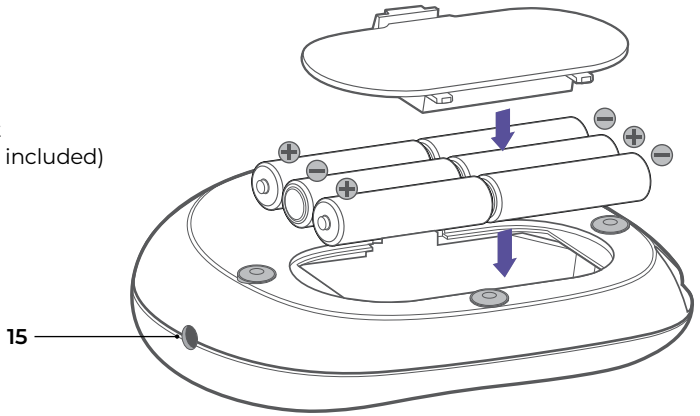
2.1 Basic Controls, Display and Features

1. Power, On/Off button 
2. Suction Level Increase Control Button 
3. Pumping Style Toggle Button 
4. LCD Display
5. Let-Down/Expression Toggle Button 
6. Suction Level Decrease Control Button 
7. Let-Down/Expression Phase Indicator
8. Time Display
9. Pumping Style Indicator
10. AC Power Indicator
11. Battery Power Indicator
12. Suction Level Indicator



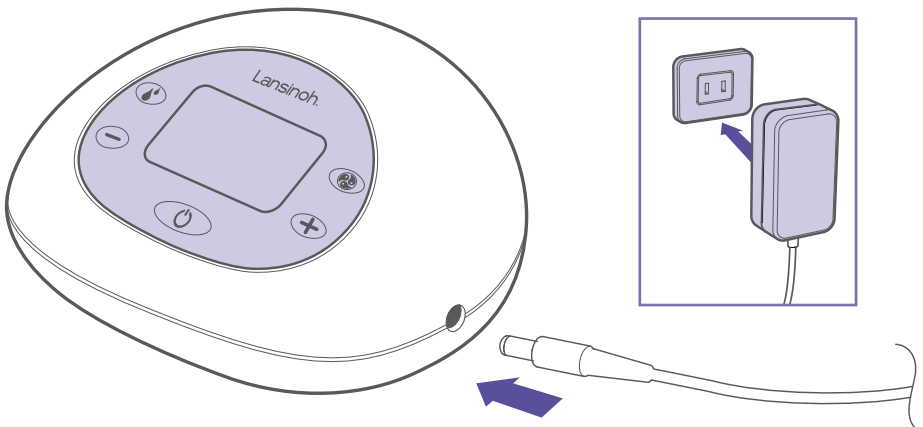


- 13. Tubing input
- 14. Battery compartment for 6 AA batteries (not included)
- 15. AC adapter input



AA Battery Compartment
(underneath pump)

AC Adapter



2.2 Lansinoh® Signature Comfort Breast Pump Parts

Item

A. Signature Comfort Tubing

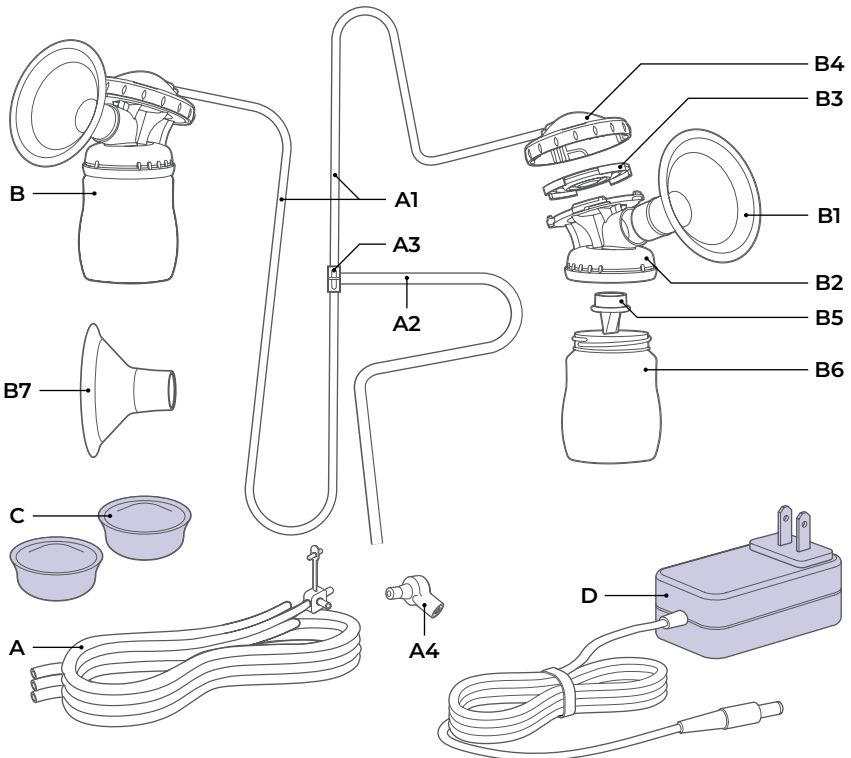
- A1** Silicone Tubes 300 mm (2)
- A2** Silicone Tube 600 mm
- A3** Signature Comfort Tubing Y Connector
- A4** Signature Comfort Pump Connector

B. Breastmilk Expression Set Includes:

- B1** ComfortFit® Breast Flange 25mm (2)
ComfortFit® Breast Flange 28mm (2)
ComfortFit® Breast Flange 30.5mm (2)
- B2** Signature Comfort Breast Flange Body (2)
- B3** Signature Comfort Diaphragm (2)
- B4** Signature Comfort Diaphragm Cap (2)
- B5** White Valve (2 + 2 extra)
- B6** 5 oz (150 ml) Bottle (2)
- B7** Silicone Flange Insert 21mm (2)
Silicone Flange Insert 19mm (2)

C. Storage Lid (2)

D. Signature Comfort AC Adapter/power cord



Two extra white valves are included.

To order replacement parts please visit Lansinoh.com/store.

3. Cleaning Instructions

Unless otherwise instructed by your healthcare provider, follow these disinfecting and cleaning instructions.

Do not boil or wash tubing or connector!

3.1 Before First Use of Breastmilk Expression Set

1. Prior to using the set for the first time, disassemble and boil all parts of the Breastmilk Expression Set that come into contact with breastmilk for 5 minutes.
 - Cover the parts with water, making sure there is room for all the parts to be submerged in water in the pot while boiling.
 - Do not boil the tubing and tubing connector. The Lansinoh® Signature Comfort is a hygienic, closed system design, which ensures breastmilk will not enter the tubing or motor.
2. Remove all parts from water immediately after boiling, using caution as parts will be hot.
3. Completely air dry before assembly and use. Partially dried parts may affect operation of the pump. Please ensure parts are completely dry before use.

3.2 Cleaning of Breastmilk Expression Set

- Set aside the tubing and tubing connector.
- The breast flange and bottles may be cleaned in the upper rack of your dishwasher or hand washed with dish soap in hot water. For best results, we recommend using a baby bottle brush to clean the bottle and a baby nipple brush to clean the insides of the breast flange. DO NOT use solvents or abrasives. Rinse with hot, clean water.
- All other parts of the Breastmilk Expression Set should be hand washed to prevent loss and to extend their usefulness.
- To clean your breast pump base, wipe with a damp cloth, using only water or mild soap.

3.3 Before Each Use of Breastmilk Expression Set

- Always wash hands thoroughly with soap and water before handling the Breastmilk Expression Set, the pump body, or other attachments.
- Ensure that the tubing is free of any liquid or moisture. Do not operate the pump if liquid or moisture is visible in the tubing.
- Ensure diaphragms are completely dry before use.
- Before each use, visually inspect the individual components for cracks, chips, tears, discoloration or deterioration, as this may affect the functionality of the Breastmilk Expression Set. Please visit Lansinoh.com/store or call 1-800-292-4794 for further guidance and replacement parts.

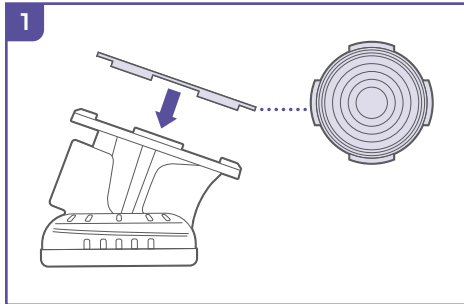
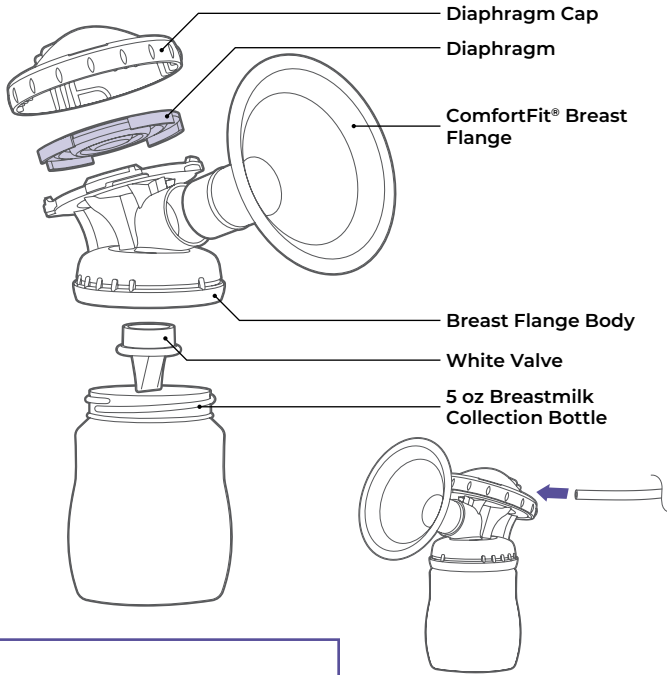
WARNING: It is highly recommended not to use any method other than the above mentioned cleaning methods.

WARNING: Use caution when cleaning the small white valve. It is important for proper suction. Do not use excessive force and do not clean with a baby bottle brush or a nipple brush. Gently wash by hand in hot, soapy water and rinse under hot running water.

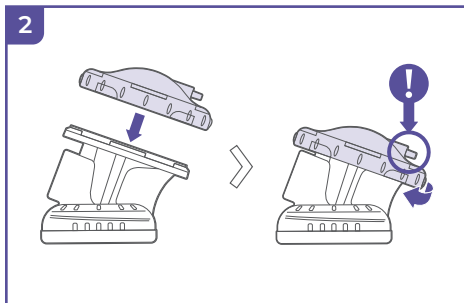
To use steam or microwave sterilisers: Follow the manufacturers instructions. Ensure all openings are face down in the steriliser. Ensure you wash your hands before removing equipment from the steriliser.

4. Assembly

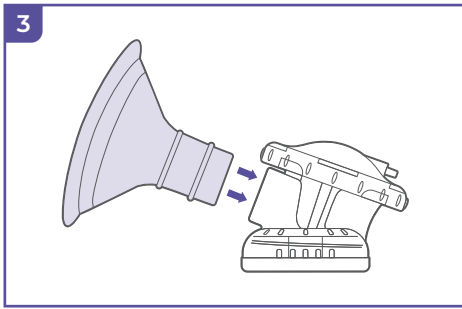
4.1 Assembling the Breastmilk Expression Set



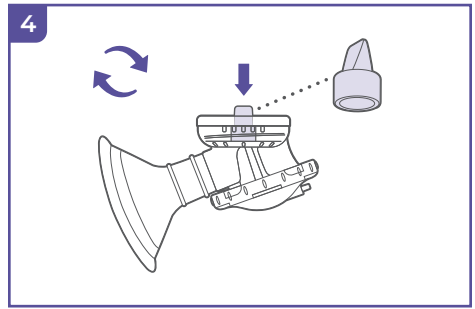
Place purple silicone diaphragm, the feet down, on the top of flange body. Ensure diaphragm fits securely between rims of breast flange body.



Place clear diaphragm cap over breast flange body and twist to secure so that the tubing portal is facing the back of the pump.

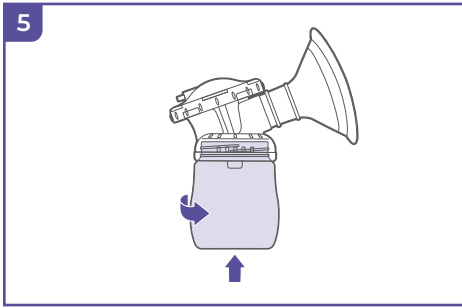


Firmly push ComfortFit® Flange into breast flange body.

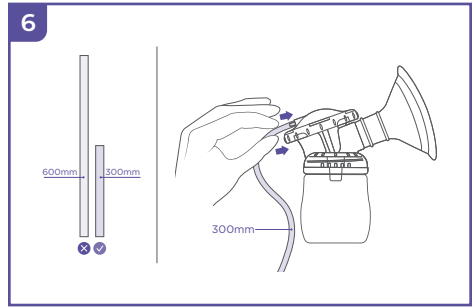


Holding the base of the white valve, gently secure the valve into the bottom of the breast flange body.

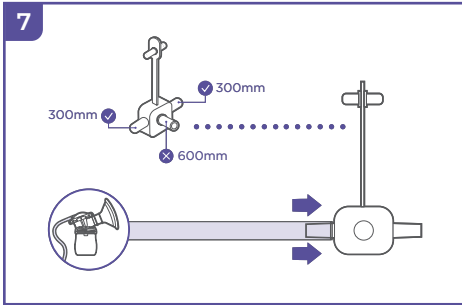
NOTE: Use care when handling and cleaning the small white valve.



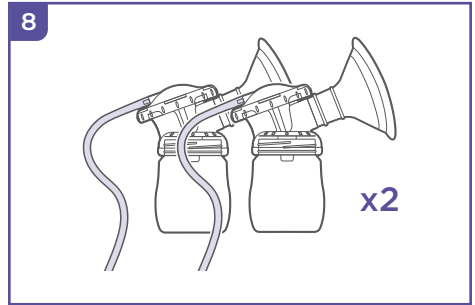
Screw collection bottle onto breast flange body.



Attach end of 300 mm tubing to back of diaphragm cap. Ensure that tubing is pushed all the way to the base of the attachment port and completely covers it.



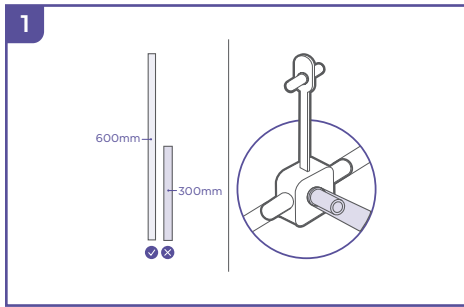
Attach other end of 300 mm tubing to Tubing Y Connector.



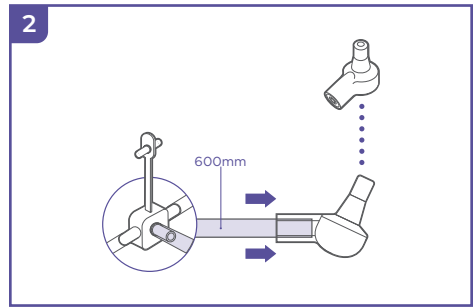
Repeat assembly process for second breast flange body.

4.2 Connecting the Breastmilk Expression Set

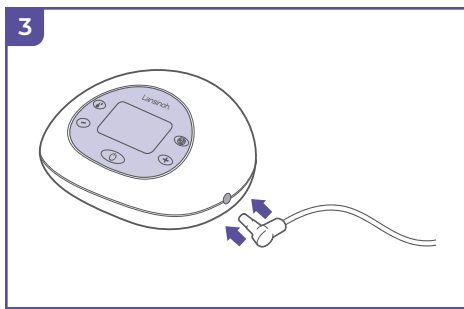
Once Breastmilk Expression Set is assembled, connect to pump base:



Secure one end of 600 mm tubing to Tubing Y Connector.

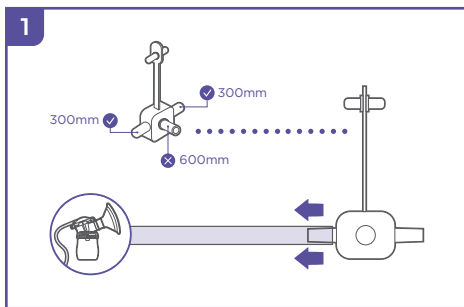


Secure other end of 600 mm tubing firmly to the pump connector.

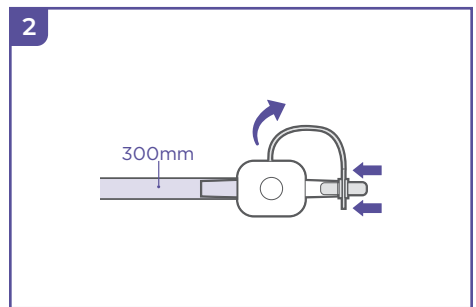


Insert pump connector into opening on left side of pump.

4.3 Connecting for Single Pumping



Remove one of the 300 mm tubing from the Tubing Y Connector.



Secure plug into open outlet of Tubing Y Connector.

4.4 Adding Silicone Flange Inserts

Each Lansinoh® Signature Comfort includes a 25mm ComfortFit® breast flange with compatible 21mm, 19mm silicone flange inserts. The 25mm breast flange may be used on its own or with the silicone flange inserts to find the right fit. If your flange size is 21mm, or 19mm, simply insert the corresponding silicone flange insert into the 25mm flange until it is securely seated. To remove the silicone flange insert, gently lift the edge of the insert and pull it out from the breast flange.

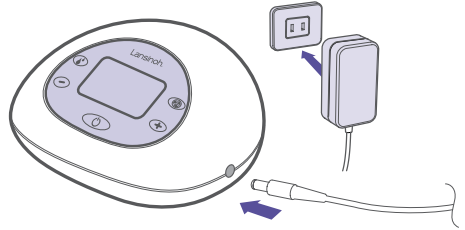
5. Using the Lansinoh® Signature Comfort Double Electric Breast Pump

5.1 Power Options

The pump may be operated using the following power supply modes:

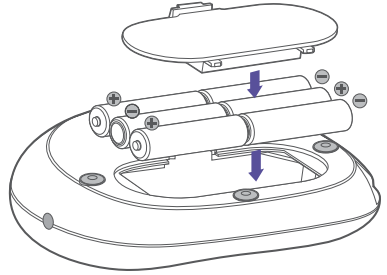
AC Adapter

1. Connect the AC adapter to the power receptacle located on the right side of the pump. Plug the AC adapter into an available electrical outlet.
2. Electrical safety can only be achieved when the breast pump is connected to the AC Power adapter supplied with the product. (See “Technical Data” section, page 19)



AA Alkaline Batteries (not included)

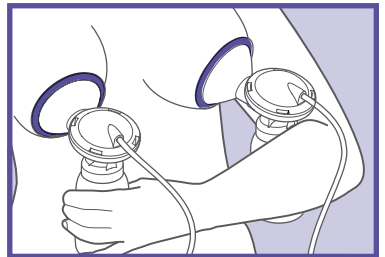
1. Make sure the batteries are inserted correctly according to the polarity (+) and (-) as indicated.
2. Close the compartment by gently pressing the cover until it snaps into place.
 - Remove batteries if pump is not in use for a long period of time.
 - Dispose of batteries according to regulations for environmental protection and recycling.
 - Replace batteries as a simultaneous set. Do not mix old and new batteries.
 - Do not mix alkaline and standard (carbon-zinc) batteries.
 - If batteries are in the pump, but AC adapter is in use, the pump will use the adapter to power the pump, not the batteries.



For the most economical use, we recommend using your pump with the AC adapter provided. Your AC adapter is a universal AC plug adapter type and can be used with 100 VAC to 240 VAC systems with 50Hz and 60Hz mains.

5.2 Getting Started

1. Hold the Breastmilk Expression Set to your breasts so that the nipple is aligned to extend straight toward the nipple tunnel of the breast flange.
2. Make sure the breast completely fills the breast flange so that a vacuum is formed and no air escapes.
3. The Breastmilk Expression Set and nipple tunnel must tilt slightly downward to allow milk to flow naturally toward the bottle.



5.3 2-Phase Technology

Using Let-Down and Expression Phases







1. Press and hold the On/Off Button to turn the pump on. The Lansinoh® Signature Comfort Double Electric Pump will start in the Let-Down Phase.
2. After two minutes, the Let-Down Phase will automatically change to the Expression Phase in Pumping Style 2.
3. If you prefer to bypass the pre-set two minute Let-Down Phase or your milk lets-down sooner than two minutes, press the Let-Down/Expression Toggle Button to move to the Expression Phase.
4. The Pumping Style Indicator will appear in the display to signify that you are in the Expression Phase.


5.4 Customization for Comfort and Efficiency

Using Customizable Pumping Styles

Choose your style

Each baby is unique – right down to the ways they feed. The Lansinoh® Signature Comfort offers three different pumping styles to choose from – so you can select the style that best simulates your baby's feeding style.

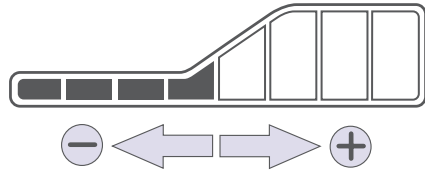
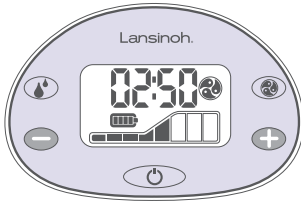
	Pumping Style 1	
	Pumping Style 2	
	Pumping Style 3	

1. With the pump in Expression phase, select the style that is most comfortable and efficient for you by pressing the Pumping Style Toggle Button .
 2. Pressing the button again will select the next style.
 3. The style will be indicated on the LCD Display by the Pumping Style Indicator.
- You may find that the best style for you changes over time. The customization features of the Signature Comfort allow you to adjust with you and your baby.

Tailor for comfort

Within each pumping style, there are eight levels of suction to choose from:

1. Adjust for higher suction by pressing the **+** suction level increase control button.
2. Adjust for lower suction by pressing the **-** suction level decrease control button.
3. The current suction level will be indicated by the number of dark bars on suction level indicator.



NOTE: If at any time the suction on your breast reaches uncomfortable levels, reduce the suction level by pressing the **-** button on the left side of the LCD screen or disconnect the tubing from its receptacle on the electric pump.

5.5 Completing Your Pumping Session

1. When a pumping session is finished, turn the pump off with the on/off **⏻** button.
2. After turning the pump off, the display will remain on for a few seconds.
3. Make sure there is no suction on the nipple(s) before removing the breast flanges from the breast. If necessary, break the suction by inserting a finger between the breast flange and the breast. Once the suction is broken, the breast flange can be removed safely.

PLEASE NOTE: The LCD display light will automatically switch off if no control buttons are pressed for 20 seconds in order to save power. If the pump unit is left on and unattended for more than 60 minutes, the control system will automatically power off. To turn unit back on, hold the power-on button for several seconds.

6. Pumping Tips

Pumping Tips

The most important part of successful pumping is the ability to trigger the let-down reflex. This is when your milk begins to flow freely. Warm wet compresses applied to the breasts and gentle, circular massaging of the breasts prior to and/or during a pumping session can help encourage this natural reflex. Thinking of or looking at your baby, or a photo of your baby if you are apart, can also be helpful. Some moms can achieve more than one let-down during a pumping session. You may be able to achieve a second by returning to the Let-Down phase by pressing the Let-Down/Expression Toggle Button.

How Long To Pump

Double pumping, compared to single pumping, will reduce the time you spend expressing your milk. Breastmilk is produced on a supply and demand basis. Expressing your breastmilk regularly will stimulate your body and help you maintain your milk supply. Just like with breastfeeding, it is not necessary to time your pumping sessions. As you get more experienced with pumping, you will get a better sense of the time it takes for your body to express your milk using a breast pump. If you have any breastfeeding or breastpump related questions, consult with an International Board Certified Lactation Consultant (IBCLC), breastfeeding counselor, or other healthcare provider such as your primary physician.

Pumping and Feeding Tips

- You may pump one breast while nursing the baby on the other. This allows you to maximize pumping effectiveness using the let-down reflex stimulated by your baby's sucking.
- Always test the temperature of any liquid before feeding your baby.
- Do not let a child take a bottle to bed or self-feed for long periods.
- To prevent possible choking hazard, test strength of the nipple by pulling on the bulb portion. Discontinue use if any tear or crack appears.

7. Troubleshooting

Troubleshooting the Lansinoh® Signature Comfort Double Electric Breast Pump

Interruption of Electrical Service

If you experience an interruption in the normal operation of the electrical and/or mechanical functioning of the pump, simply do the following:

- Unplug the AC adapter cord from the electrical outlet.
- Wait a few seconds, and then plug the AC adapter cord back into the electrical outlet. If you still experience electrical failure, try using the pump with the six AA batteries making sure the AC adapter is removed.

Decreased Suction

If it feels like the suction has decreased, try the following:

- Remove the tubing from pump and place a finger over the tubing connector.
- If you feel suction, the pump is operating properly, but the Breastmilk Expression Set may not be correctly assembled or the white valve may be damaged.
- Make sure the Breastmilk Expression Set has been properly assembled. Check the assembly information in the section “Assembling the Breastmilk Expression Set,” pages 9-11.
- Inspect the white valve for a tear or pinhole. This component is critical to achieving proper suction. Replace the white valve with one of the spare valves provided with the product.
- If no suction is felt on your finger, try unplugging the adapter from the electrical outlet, wait a few seconds, and plug it back into the electrical outlet.
- When single pumping, check the tubing connector on the front of the pump to make sure it is closed for single pumping. If open, close the connector.
- If double pumping, ensure that the Breastmilk Expression Set is on both breasts before starting the pump.

Increased suction level for single pumping:

If it feels like the suction is higher than usual when single pumping, check that the plug for the pipe is clean and that the airway in the plug is not blocked.

8. Breastmilk Storage Guidelines

Breastmilk Storage and Thawing Guidelines for Full-term Healthy Babies

Check with your healthcare provider or an International Board Certified Lactation Consultant for specific storage instructions. When freezing, store in the back of the freezer and do not store milk in the door as temperature can fluctuate as the door is opened and closed.

Guide to storing fresh breastmilk for use with healthy, full-term babies

PLACE	TEMPERATURE	HOW LONG	THINGS TO KNOW
Countertop, table	Room temperature (up to 77°F)	Up to 4 hours	Containers should be covered and kept as cool as possible. Covering the container with a clean cool towel may keep milk cooler. Throw out any leftover milk within 2 hours after the baby is finished feeding.
Refrigerator	40°F	Up to 4 days	Store milk in the back of the refrigerator. When at work, it's OK to put breastmilk in a shared refrigerator. Be sure to label the container clearly.
Freezer	0°F or colder	Within 6 months is best. Up to 12 months is acceptable	Store milk toward the back of the freezer where the temperature is most constant. Milk stored at 0°F or colder is safe for longer durations, but the quality of the milk might not be as high.

Source: Adapted from 7th Edition American Academy of Pediatrics (AAP) Pediatric Nutrition Handbook (2014); 2nd Edition AAP/American College of Obstetricians and Gynecologists (ACOG) Breastfeeding Handbook for Physicians (2014); Academy of Breastfeeding Medicine (ABM) Clinical Protocol #8 Human Milk Storage Information for Home Use for Full-Term Infants (2017); CDC Human Milk Storage Guidelines (2024).

Date all breastmilk and use the oldest breastmilk first.

NOTE: DO NOT refreeze milk once it is thawed.

NOTE: DO NOT thaw breastmilk in hot or boiling water.

9. The Lansinoh® NaturalWave® Nipple

Clinically proven to reduce nipple confusion for breastfed babies

The patented NaturalWave® Nipple enables baby to replicate natural sucking actions learned at the breast. Exclusive breastfeeding is recommended for the first 6 months of baby's life. It is recommended that breastfeeding and breastmilk production should be firmly established before introducing a bottle and nipple.

Storage & Use:

Prior to use, always inspect and pull the feeding nipple in all directions to check the product. Throw away at the first signs of damage or weakness. For safety and hygiene reasons, replace the nipple every 7 weeks. Before first use, boil all parts for 5 minutes to disinfect. Ensure all parts are completely covered in water and free floating.

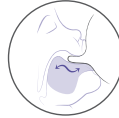
Cleaning:

Before first use, place all components in boiling water for 5 minutes, allow to cool and thoroughly rinse all bottle components. Always wash all components of the product immediately after each use. The feeding nipple can be washed in hot soapy water and rinsed in clean water. Dishwasher safe on top rack only. Safe to clean in a microwave-safe, steam sterilizer bag and special sterilizing machine. Do not clean with solvents or harsh chemicals



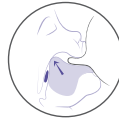
1. Attachment

The lips and tip of tongue latch onto the teat. The nipple is held tightly inside the oral cavity



2. Peristaltic tongue movement

The undulating motion of the tongue compresses and releases the nipple



3. Swallowing

Infant swallowing transfers the milk down to the esophagus.

Assembly:

Once thoroughly dry, insert feeding nipple through the top of the screw cap collar. Attach the screw cap collar securely onto the bottle neck. When carrying a full bottle, make sure it is closed with the collar in place, taking care to position the feeding nipple in the center of the collar to activate the “spill-proof” function of the product.

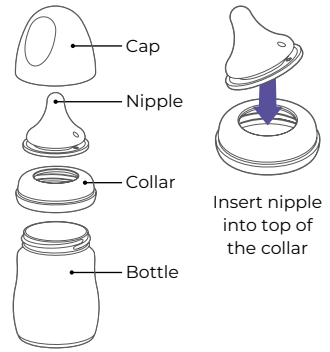
Precautions:

Do not leave bottle in direct sunlight, or heat, or disinfect the bottle with a sterilizing solution, as this may weaken the nipple. Do not clean with or allow bottle parts to come into contact with solvents or harsh chemicals. Damage could result. Fill with the required amount of liquid and tighten the collar before using. Do not overfill. Heating in a microwave is not recommended as it may produce uneven heating and high localized temperatures. If you choose to heat liquid this way, do not seal bottles. Gently shake or swirl bottle to mix before use, and always check the temperature before feeding baby. Hot or unevenly heated liquid may burn baby’s mouth. Do not warm liquid by placing the bottle directly onto gas or electric rings, warming plates, in electric ovens, etc. Wash after every use.

WARNING!

DO NOT MICROWAVE HUMAN MILK! Microwaving alters the composition of the milk and may also create “hotspots” in the milk that could burn the infant. Allowing your child to use this product for prolonged periods separate from regular mealtimes or to go to sleep while drinking liquids, other than water, from this bottle may cause or contribute to early childhood tooth decay. Always use this product with adult supervision. Keep all components not in use out of the reach of children. Do not leave baby alone with drinking equipment due to the risk of choking. Never use feeding nipple as a pacifier or soother. Always check liquid temperatures before feeding. Packaging materials are not part of the product. For your child’s safety, please remove and discard all packaging materials prior to use but read and retain the instructions for future reference.

WARNING: Packaging materials are not part of the product. For your child’s safety, please remove and discard all packaging materials prior to use but read and retain the instructions for future reference. Never attach to cords, ribbons, laces, or loose parts of clothing. The child can be strangled.



10. Technical Data

The expected service life of the pump is 500 hours.

1. Power Supply

Battery operation: 6 AA size alkaline batteries, all connected in series

Battery operating time: Minimum 30 minutes. Maximum 2 hours. Results are dependent on battery freshness and pump settings.

AC Adapter operation: 100-240VAC wall plug type AC adapter, galvanically isolated with 9Vdc output voltage

Pump power dissipation: 10.0 Watts maximum

Voltage regulation: Linear voltage regulator with low dropout voltage and short circuit protection

2. Control System

Control unit: Microcontroller with integral program memory

Program memory: 32K flash ROM, 2K RAM memory








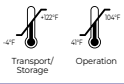
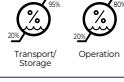



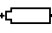

HMI: LCD display with LED backlight, soft keypad

Single / double control: Single or double breast pumping possible

Selectable pumping style: 3 pumping styles are selectable and controlled from keypad

Adjustable suction level: 8 suction levels are selectable and controlled from keypad

Suction vacuum range (Expression/ Double pumping): Minimum 85mmHg, Maximum 280mmHg

SYMBOLS	MEANING OF THE SYMBOLS
	Follow instructions for use
	Identifies the manufacturer
	Indicates the date of manufacture
	Type BF applied part
	Class II equipment
	Keep the device dry
	Keep the device away from sunlight
	Indicates the temperature limitation for operation, transport and storage
	Indicates the humidity limitation for operation, transport and storage
	Indicates the atmospheric pressure limitation for operation, transport and storage
IP22	Indicates the protection against ingress of solid foreign objects and against harmful effects due to the ingress of water
	This pump is made of various metal and plastics. Before disposal, the device is to be rendered unusable and it must be disposed of as sorted waste in accordance with local waste electrical and electronic equipment regulations. To avoid the harmful effects on the environment and public health align with your defined local return and collection rules for waste electrical and electronic equipment (incl. batteries).
	Indicates that the packaging contains products intended to come in contact with food
	Indicates the positioning of battery cell
	Indicates to handle the fragile device with care

Technical Data

Power Requirements

AC Adapter (included)

AC Adapter – North American

Plug Configuration

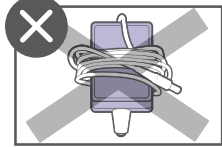
100-240VAC wall plug type

AC adapter, galvanically isolated adapter with 9Vdc output voltage.

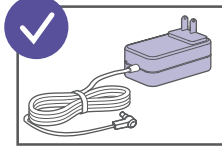
Batteries (not included)

6 AA batteries, 1.5V alkaline

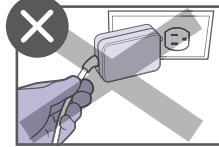
To maintain your power adapter follow these instructions:



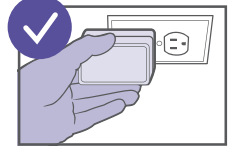
DO NOT wrap cord of power adapter around the plug body.



CORRECT



DO NOT unplug power adapter by pulling on the cord.



CORRECT

DO NOT use power adapter if damaged.



WARNING: Children have STRANGLED in cords. Keep the cords out of the reach of children.

11. Warranty

Limited Consumer Product Warranty (United States)

This product is warranted to the original consumer purchaser (the “purchaser”) to be free from defects in material and workmanship which are not commercially acceptable for the period of one year from the date of purchase on the pump mechanism and the period of 90 days on all other product components. Warranty coverage terminates if you sell or otherwise transfer this product to another person. This warranty gives you specific legal rights and you may also have other rights, which vary, by location.

LANSINOH® MAKES NO EXPRESS WARRANTY OF ANY KIND REGARDING THE PRODUCT OTHER THAN THOSE WARRANTIES EXPLICITLY SET FORTH HEREIN. ANY IMPLIED WARRANTY, INCLUDING ANY IMPLIED WARRANTY OF MERCHANTABILITY OR ANY IMPLIED WARRANTY OF FITNESS FOR A PARTICULAR PURPOSE, TO THE EXTENT PERMITTED BY LAW, SHALL BE LIMITED IN DURATION TO A PERIOD OF 90 DAYS FROM THE DATE OF PURCHASE BY THE ORIGINAL PURCHASER.

In the event the product is found by Lansinoh® to not meet the above limited warranty, as purchaser's sole and exclusive remedy Lansinoh® will repair or, at the option of Lansinoh®, replace this product without charge for such replacement or parts or labor.

NOTE: The purchaser shall bear all expense for returning this product to Lansinoh®. This warranty does not apply to any product that has been subjected to misuse, abuse, or alteration.

Only Lansinoh® brand replacement parts are recommended for use with Lansinoh® breastfeeding products. Improper or incorrectly performed maintenance or repair, or use of non-Lansinoh® brand replacement parts may invalidate this warranty.

TO THE EXTENT PERMITTED BY LAW, LANSINOH® SHALL NOT BE LIABLE FOR ANY INCIDENTAL OR CONSEQUENTIAL DAMAGES INCLUDING, BUT NOT LIMITED TO, REPLACEMENT COSTS RESULTING FROM THE BREACH OF ANY WRITTEN OR IMPLIED WARRANTY.

If you wish to make a claim under this warranty, you must return the product to Lansinoh Laboratories Inc., prepaid, together with your dated bill of sale or other dated proof of purchase and a brief statement of the problem, along with a Replacement Authorization (RA) number. You may obtain the appropriate Replacement Authorization number and shipping address by calling the phone number or sending an email to the email address provided below.

Items returned without an associated Replacement Authorization Number will be returned to sender.

To obtain the address to Return Goods or a Replacement Authorization Number: **800-292-4794** or **customerservice@lansinoh.com**

Submit warranty card online at [Lansinoh.com/warranty](https://www.lansinoh.com/warranty)

12. Declaration for Electromagnetic Compatibility (EMC)

12.1 For Information Use Only

Medical electrical equipment. This table is referenced from Table 9 of IEC 60601-1-2 General requirements for basic safety and essential performance. Collateral Standard: Electromagnetic disturbances - Requirements and tests

Guidance and Manufacturer's Declaration - Electromagnetic Emissions		
This breast pump is intended for use in the electromagnetic environment specified below. The customer or the user of the breast pump should assure that it is used in such an environment.		
Emission Tests	Compliance	Electromagnetic Environment - Guidance
RF emissions CISPR11	Group 1	The breast pump uses RF energy only for its internal function. Therefore, its RF emissions are very low and are not likely to cause any interference in nearby electronic equipment.
RF emissions CISPR11	Class B	The breast pump is suitable for use in all establishments, including domestic establishments and those directly connected to the public low-voltage power supply network that supplies buildings used for domestic purposes.
Harmonic emissions IEC 61000 -3-2	Class A	
Voltage fluctuations/flicker emissions IEC 61000 -3-3	Not Applicable	
WARNING - This breast pump should not be used adjacent to or stacked with other equipment. If adjacent or stacked use is necessary, this breast pump should be observed to verify normal operation in the configuration in which it will be used.		


Guidance and Manufacturer's Declaration - Electromagnetic Immunity

This breast pump is intended for use in the electromagnetic environment specified below.

The customer or the user of the breast pump should assure that it used in such an environment

THE LANSINOH® SIGNATURE COMFORT ELECTRIC BREAST PUMP has no essential performance but was tested for immunity to electromagnetic disturbances and passed using the following criteria:

1. No visible change in the operation of the breast pump.
2. The breast pump changes settings but returns automatically to previous settings.
3. The breast pump changes settings but can return to previous settings by intervention of the user.

Immunity Test	IEC 60601 Test Level	Compliance Level	Electromagnetic Environment - Guidance
Electrostatic discharge (ESD) IEC 61000 -4-2	± 8 kV contact ± 2 kV, ± 4kV, ± 8 kV, ± 15kV air	± 8 kV contact ± 2 kV, ± 4kV, ± 8 kV ± 15kV air	Floors should be wood, concrete or ceramic tile. If floors are covered with synthetic material, the relative humidity should be at least 30%.
Electrical fast transient / burst IEC 61000 -4-4	± 2 kV 100 kHz repetition frequency	± 2 kV 100 kHz repetition frequency	Mains power quality should be that of a typical commercial or hospital environment.
Surge IEC 61000 -4-5	± 0,5 kV, ± 1 kV Line-to-line	± 0,5 kV, ± 1 kV Line-to-line	Mains power quality should be that of a typical commercial or hospital environment.
Voltage dips, short interruptions and voltage variations on power supply input lines IEC 61000-4-11	0% UT; 0.5 cycle At 0°, 45°, 90°, 135°, 180°, 225°, 270° and 315°	0% UT; 0.5 cycle At 0°, 45°, 90°, 135°, 180°, 225°, 270° and 315°	Mains power quality should be that of a typical commercial or hospital environment. If the user of the breast pump requires continued operation during power mains interruptions, it is recommended that the breast pump be powered from an uninterruptible power supply or a battery.
Power frequency (50/60 Hz) magnetic field IEC 61000 -4-8	30A/m	30 A/m	It may be necessary to position the breast pump further from sources of power frequency magnetic fields or to install magnetic shielding. The power frequency magnetic field should be measured in the intended installation location to assure that it is sufficiently low.
Conducted RF IEC 61000 -4-6 Radiated RF IEC 61000-4-3	3V 0,15 MHz - 80 MHz 6 Vin ISM and amateur radio bands between 0,15 MHz and 80MHz 80 % AM at 1 KHz 10V/m 80 MHz -2.7 GHz 80% AM at 1 KHz	6V 10V/m	Portable and mobile RF communications equipment should be used no closer to any part of the breast pump, including cables, than the recommended separation distance calculated from the equation applicable to the frequency of the transmitter. Recommend separation distance $d = 1.2 \sqrt{P}$ $d = 1.2 \sqrt{P}$ 80 MHz -800 MHz $d = 2.3 \sqrt{P}$ 800 MHz- 2.7 GHz  Where P is the maximum output power rating of the transmitter in watts (W) according to the transmitter manufacturer and d is the recommended separation distance in meters (m). Field strengths from fixed RF transmitters, as determined by an electromagnetic site survey, should be less than the compliance level in each frequency range. Interference may occur in the vicinity of equipment marked with the following symbol.

NOTE 1 At 80 MHz and 800 MHz, the higher frequency range applies.

NOTE 2 These guidelines may not apply in all situations. Electromagnetic propagation is affected by absorption and reflection from structures, objects and people.

Field strengths from fixed transmitters, such as base stations for radio (cellular/cordless) telephones and land mobile radios, amateur radio, AM and FM radio broadcast and TV broadcast, cannot be predicted theoretically with accuracy. To assess the Electromagnetic environment due to fixed RF transmitters, an electromagnetic site survey should be considered. If the measured field strength in the location in which the breast pump is used exceeds the applicable RF compliance level above, the breast pump should be observed to verify normal operation. If abnormal performance is observed, additional measures may be necessary, such as re-orienting or relocating the breast pump. Over the frequency range 150 KHz to 80 MHz, field strengths should be less than 10 V/m.

Recommended Separation Distances Between Portable and Mobile RF Communications Equipment and the Breast Pump

This electric breast pump is intended for use in electromagnetic environment in which radiated RF disturbances are controlled. The customer or the user of the electric breast pump can help prevent electromagnetic interference by maintaining a minimum distance between portable and mobile RF communications equipment (transmitters) and the electric breast pump as recommended below, according to the maximum output power of the communications equipment.

Rated maximum output power of transmitter W	Separation distance according to frequency of transmitter m		
	150kHz to 80MHz d= 1,2 √P	80MHz to 800MHz d= 1,2 √P	800MHz to 2,7 GHz d= 2,3 √P
0,01	0,06	0,04	0,07
0,1	0,18	0,11	0,22
1	0,58	0,35	0,22
10	1,84	1,11	2,21
100	5,83	3,50	7,00

For transmitters rated at a maximum output power not listed above, the recommended separation distance d in meters (m) can be estimated using the equation applicable to the frequency of the transmitter, where P is the maximum output power rating of the transmitter in watts (W) according to the transmitter manufacturer.

NOTE 1 at 80 MHz and 800 MHz the separation distance for the higher frequency range applies

NOTE 2 These guidelines may not apply in all situations. Electromagnetic propagation is affected by absorption and reflection from structures, objects, and people.

WARNING: Portable RF communications equipment (including peripherals such as antenna cables and external antennas) should be used no closer than 30 cm (12 inches) to any part of the breast pump including cables specified by the manufacturer. Otherwise, degradation of the performance of this equipment could result.

Using other cables and accessories that not provided from Lansinoh® may negatively affect EMC performance.

12.2 FCC Statement

This device complies with part 15 of the FCC rules. Operation is subject to the following two conditions: (1) This device may not cause harmful interference, and (2) this device must accept any interference received, including interference that may cause undesired operation.

12.3 Wireless Statement

Wireless communications equipment such as wireless home network devices, mobile phones, cordless telephones and their base stations, walkie-talkies can affect this equipment and should be kept at least a distance of 3.5m away from the equipment.

12.4 Stacking

This device should not be used adjacent to or stacked with other equipment. And if adjacent or stacked use is necessary, this device should be observed to verify normal operation in the configuration in which it will be used.

12.5. Disposal




The symbol which can be found on the product or on the package surface indicates that the product mustn't be disposed with other household wastes.

Waste equipment disposal by handing it over predetermined collection point for recycling is solely users' responsibility. Separate collection of the waste equipment and recycling them properly will preserve the natural resources, have a positive affect on the environment and will protect human health. For further information about the recycling collection points, please contact your local authority or place you purchased the product.

Serious events experienced from using this product should be reported immediately to Lansinoh Laboratories and to the local competent Authority.

This product is a personal care product and therefore cannot be returned once opened. If you experience any problems with this product, please telephone our free customer service line at **800-292-4794** or email **customerservice@lansinoh.com**.

This product is a personal care product and therefore cannot be returned once opened. If you experience any problems with this product, please telephone our toll free customer service line at **800-292-4794**. Our representative will be happy to assist you.

 Manufacturer: Lansinoh® Laboratories Saglik Gerecleri Tasarim San. Tic. Ltd. Sti.
Zafer 5B Mah. Gunduz Sk. No:13 E.S.B Gaziemir/ Izmir/ Turkiye

Distributed by:
Lansinoh Laboratories, Inc, Alexandria, VA 22314 USA, +1 800-292-4794 | Lansinoh.com

Lansinoh® is a registered trademark of Lansinoh Laboratories, Inc.
© 2025 Lansinoh Laboratories, Inc. All rights reserved. Printed in Turkiye

DE53051IF0525 v1

Date of Issue of the Instructions for Use: 2025-05-30

